

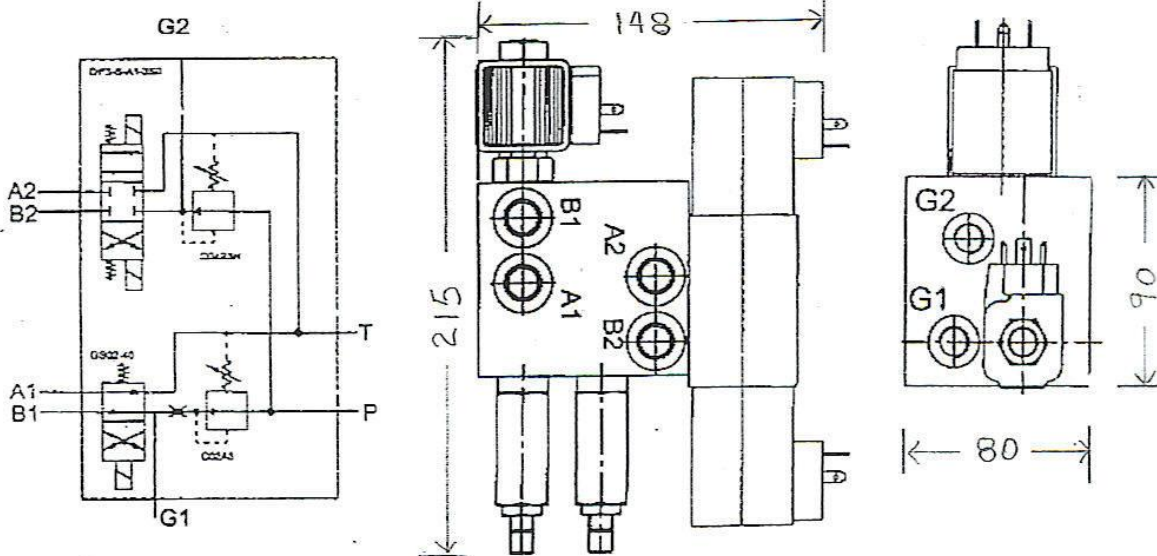
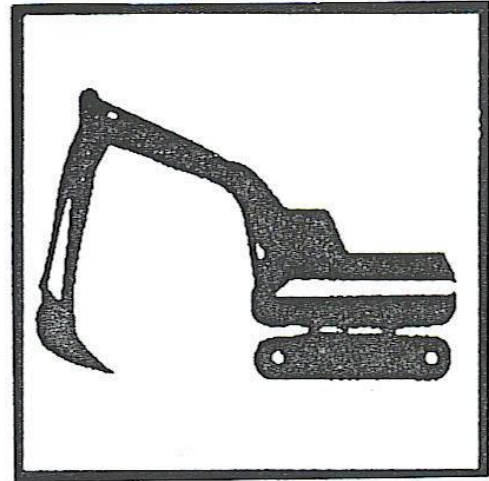
INDUSTRIAL HYDRAULICS

Combination Quick Hitch - Tilt Valve

QT VALVE

Features:

- ❑ Economically priced
- ❑ Dirt tolerant direct acting valves
- ❑ Compact design Dual function unit
- ❑ Ductile cast iron body
- ❑ Two independent Gauge ports on reduced pressure sides
- ❑ Independent adjustable pressure reduction to Quick Hitch and Tilt circuit
- ❑ Orifice allows connection to high flow circuits on Quick Hitch while allowing full flow to Tilt circuit
- ❑ 9/16" UNF O ring seal ports for positive sealing & easy adaptation to all thread types including ORFS.
- ❑ Tilt valve C Top 3 standard. (Order separately OP3A1-3-24DC)



Specifications

- ❑ Max inlet pressure..... 350 bar
- ❑ Reduced pressure range Quick Hitch....138-186 bar (std)
- ❑ Reduced pressure range Tilt circuit.....50-300 bar (std)
- ❑ Ports service & gauge.....9/16" UNF
- ❑ 100% Heavy Duty coils.....19 watt
- ❑ 12 & 24 DC - 115 & 240 AC coils.....24DC (std)