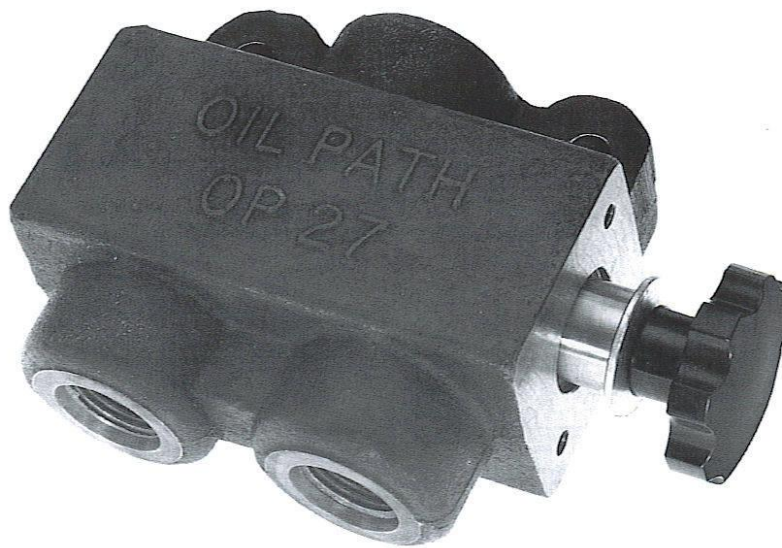


# OILPATH

OP 27

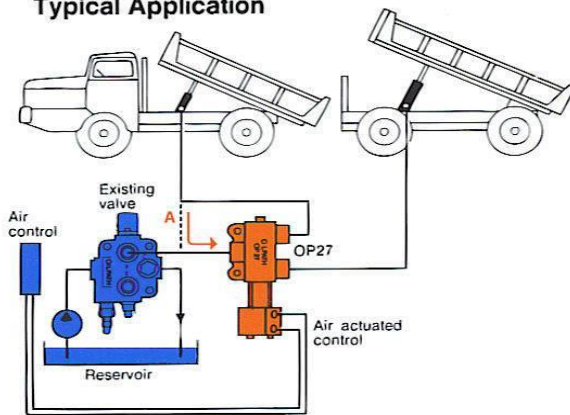
## SELECTOR VALVE



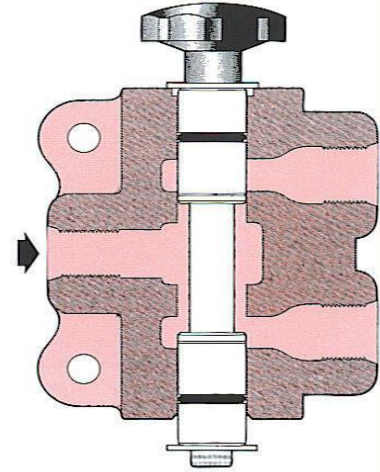
For diverting a single oil flow to either of two hydraulic circuits

**3-port, cast iron construction.**  
**Simple, push-pull operation.**  
**Working pressure up to 3000 psi.**  
**Flow capacity up to 25 gpm.**  
**Easily added to existing OP20 circuit**  
**to facilitate control of additional equipment.**

## Typical Application

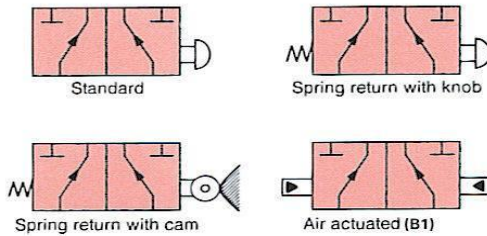


When a tip trailer is added to an existing tip truck, OP27 can be installed as shown. Line (A) from existing valve is removed from cylinder and connected to OP27 inlet port. OP27 outlets are then connected to truck and trailer tip cylinders. Where an air supply is available, OP103 air activated control can be fitted for added convenience.



SECTION

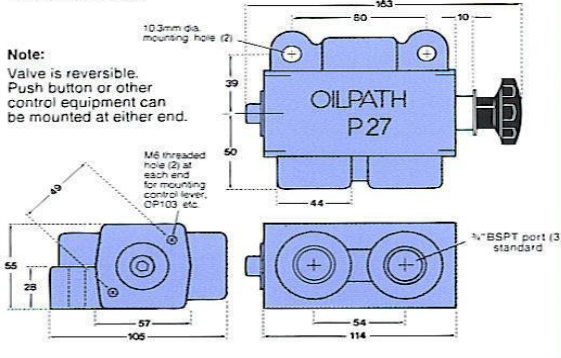
Specifications given in this brochure are correct at time of publication. The manufacturer reserves the right to change specifications without notice.



### Options (available on special order);

- Port sizes: 1/2" BSPT, 3/4" BSPT, 1" BSPT, 3/8" UNF O-ring, 1 1/2" UNF O-ring.
- Controls: OP103 (air actuated), Morse cable control, OP20 handle instead of push-pull knob, Knob control, Spring return optional, Cam roller, spring return.

## Dimensions



## Specifications

Ports	3/4" BSPT standard.
Spool	Hard chrome plated.
Leakage	1 cjpm at 3000 psi.
Flow capacity	25 gpm (Imperial).
Max. pressure	3000 psi.
Detent	Factory fitted on request.

## WARRANTY

Oilpath products are warranted to be free of defects in material or workmanship. This Warranty voids all other warranties, whether expressed or implied, and shall be in effect for six months from date of purchase. The Warranty is limited to replacement or repair, excluding seals or damage arising from misuse or incorrect installation. The Company accepts no liability for faults caused by improper use or faulty maintenance of the product, or its operation beyond recommended specifications, or contingent or consequential loss or damage under any situation whatsoever. All unauthorised modifications to the product automatically voids the conditions of this Warranty.



10-14 MAUD STREET, NEWSTEAD, 4006  
P.O. BOX 50, FORTITUDE VALLEY, 4006  
Email: sales@industrialhyd.com.au

PHONE: (07) 3854 1232

FAX: (07) 3252 2346